

IMPROVEMENT PROJECTS

- 1

Existing Oval
 - Resurface oval and upgrade drainage
 - Upgrade irrigation
 - Replace sections of the oval perimeter fence to make good
 - Replace home and away interchange benches
 - Upgrade goal posts to be 10m and 6.5m
 - Include time keepers and scorers box
 - Increase width of cricket pitch to be 28m x 2.8m and rotate pitch for optimum playing
 - Provide spectator seating around the oval
- 2

Cricket Nets
 - Upgrade enclosure fencing
 - Provide power access to allow for bowling machines
- 3

Netball / Multi - courts
 - Hanger type roof over the courts
 - Install a second netball court with basketball line markings
 - Include spectator seating
 - Storage for Cricket and Netball
- 4

Informal Grassed Area / Village Green
 - Level grassed playing surface as required and resow to enable usage for training / junior / practice matches.
 - Removable goals in sleeves.
 - Retain existing power supply and hard stand for events and equestrian use.
 - Open area to enable flexible use by the community.
- 5

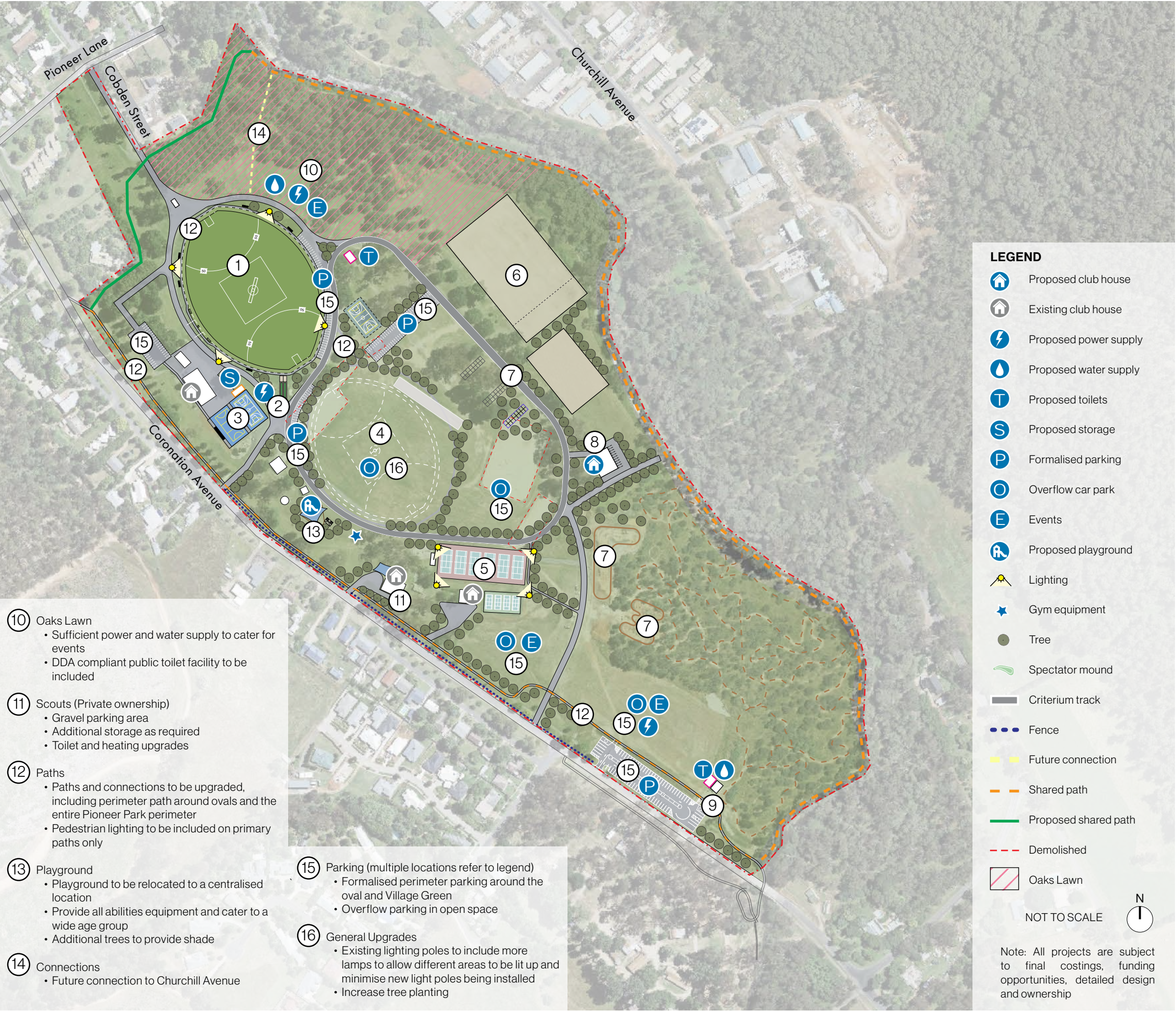
Tennis (Private ownership)
 - Provision for 2 additional courts with upgraded lights
 - Relocated hit wall
 - Ensure accessible entry to clubhouse and courts
 - Upgrade tennis clubhouse amenities to be accessible and gender inclusive
- 6

Equestrian
 - Consolidate horse arenas to the northern area of Pioneer Park
 - Partition large arena to include small arena
 - Additional horse yards + shade
 - Improve perimeter fencing
 - Concrete bay at wash bay
 - Screening along boundary
- 7

MTB/Cycle Area
 - 950m criterium track to be integrated into existing internal road (6m wide track, except for the finishing straight, which shall be 8m wide for the last 200m)
 - Jump track to be maintained
 - Pump track to be capped
- 8

Proposed New Club house
 - Integrated clubhouse facility for the Pony Club, Adult Riding Club and Cycling Club, including Mystic Park users.
- 9

Mystic Park
 - Inclusion of toilet facilities and a drinking tap at trailhead
 - Car park to be fenced
 - Rail trail to be realigned around new parking area



PIONEER PARK SCHEMATIC DESIGN

IMPROVEMENT PROJECTS

- 1

Mount Beauty Reserve
 - Resurface oval and install new drainage and irrigation systems
 - Replace home and away interchange benches and locate on western side of oval
 - Upgrade size of goal posts to 10m and 6.5m
 - Upgrade sports lighting to LED 100 lux
 - Upgrade spectator seating
 - Replace sections of the oval perimeter fence to make good
- 2

Les Peart Oval
 - Add AFL posts for recreational use only
 - Increase cricket pitch size to meet competition standards (28m x 2.8m)
 - Replace sections of the oval perimeter fence to make good
 - Resurface oval and upgrade drainage
 - Upgrade irrigation system
 - Provide power access
 - Provide drinking taps near to the oval
 - Provide additional storage to cater for the user groups of Les Peart Oval.
 - Add two junior soccer field line marking to both sides of the cricket pitch - sitting parallel
 - Develop athletic tracks such as long jump, adjacent to the CFA training strip
 - Provide spectator seating / mound at Les Peart Oval
- 3

Cricket Nets
 - Upgrade cricket nets
- 4

Mount Beauty Recreation Reserve Clubroom
 - Upgrade toilet and change room facilities to provide DDA amenities.
 - Potential for DDA compliant toilet to be public facing
 - General club house upgrades, including kitchen area
- 5

Tennis
 - Upgrade enclosure fencing
 - Repair ditch on court 2 and 3 to improve drainage
- 6

Club house
 - Demolish existing Tennis Club house and Scout Hall and rebuild new community facility to cater for Tennis Club, Scout Hall and users of Les Peart Oval, with toilet facilities and storage.
- 7

Netball court
 - Provide benches on netball court
- 8

Mount Beauty Pool
 - Upgrades to pool subject to aquatic analysis
 - Provide free standing storage
- 9

Bicentennial Park Playground
 - Explore opportunities to include additional play options to cater to all abilities.
- 10

Neighbourhood Centre
 - Provide shade trees near car park area
 - Include a reflection garden at the Neighbourhood Centre

- 11

General upgrades
 - Increase tree planting
 - Develop and implement a wayfinding strategy including signage to facilities and areas, and safety signage
 - Upgrade roads and pathways for visitor safety and improve connectivity
 - Provide outdoor gym equipment
 - Provide shaded areas for spectating and gathering
 - Upgrade/provide seating around the park
 - Provide more bins



MOUNT BEAUTY SPORTS AND EDUCATION PRECINCT SCHEMATIC DESIGN

IMPROVEMENT PROJECTS

- 1

Oval
 - Replace home and away interchange benches
 - Convert sports lighting to LED when current lighting needs replacement
 - Upgrade sub-surface drainage of the oval for longer usage time and maximise playability.
 - Upgrade irrigation
 - Include more spectating space around the oval, including sheltered seating
 - Include 3 pitch turf centre wicket
- 2

Ablett Pavilion
 - Extension of the Ablett Pavilion to include a health and wellness facility, including gym and physio area
 - Ensure all player and umpire toilet & shower areas are compliant and female-friendly
 - Upgrade size of umpire room
- 3

Netball / tennis courts
 - Proposed new court arrangement to include one separate netball show court (one tennis court removed due to space constraints)
 - Ensure new layout of courts to allow for minimum run off requirements for both netball and tennis (goals/sidelines: 3.05m and between courts 3.65m)
 - Resurface netball/tennis courts
 - Seating and shelter for players and scorers at tennis/netball courts.
 - Netball show court to include team shelter and official bench
 - Install electronic scoreboard (and provide power access) at netball courts
 - Extend shelter at netball/tennis shelter for spectating
 - Fencing at the tennis/netball courts to be upgraded
- 4

Canine Club
 - Expand and upgrade clubhouse, including upgrade flooring, inclusion of toilets, Increase in storage space, insulation, dog bathing area, undercover training area
 - Provide windbreaks
- 5

Community amenities / facilities
 - Outdoor fitness equipment to be retained. Opportunity to be relocated
 - Include playground
 - Formalise parking
 - Retain overflow car park



RC MCNAMARA RESERVE SCHEMATIC DESIGN

IMPROVEMENT PROJECTS

- ① Oval
 - Upgrade sub-surface drainage and irrigation (to an automated system) at Memorial Park oval to maximise the playability of the oval.
 - Upgrade to turf pitch and hard wicket. Ensure cricket pitch to be orientated north-south.
 - Proposed 50 lux sports lighting for football training use
- ② Cricket nets
 - Upgrade Memorial Park cricket nets to 4 nets. Include curtain nets and power access. Orientate to north-south orientation
- ③ Cricket Club House
 - Upgrade Memorial Park club house - potential to relocate clubhouse within the grounds to allow for more car park space near the childcare centre.
 - Upgrade change rooms and toilets to be accessible and gender inclusive
 - Increase storage at Memorial Park including ground maintenance equipment
- ④ Parking
 - Future car park upgrades
- ⑤ Community facilities / amenities
 - Install perimeter path around oval
 - Provide spectator seating at Memorial Park



MEMORIAL PARK SCHEMATIC DESIGN

IMPROVEMENT PROJECTS

- ① Tennis Club (Private ownership)
 - Upgrade enclosure fencing - include top and bottom rail fencing
 - Upgrade gate to have universal and emergency access
 - Upgrade surface levels and drainage
 - Upgrade irrigation system
 - Inclusion of solar panels on club house
 - Expand machinery shed
 - Upgrade to DDA access to club house
 - Provide accessible change rooms
 - Replace retaining wall between tennis club and swimming pool
- ② Myrtleford Pool - Aquatics analysis to confirm upgrades
 - Repair surface cracking and level changes at the Myrtleford Pool.
 - Provide shade at Myrtleford Pool
- ③ Lawn Bowls Club (Private ownership)
 - Convert one of the greens at Myrtleford Bowls Club to synthetic grass and cover only the synthetic green.
 - Upgrade Myrtleford Bowls Club - upgrade the toilet and change rooms to be DDA
 - Formalise car parking at Bowls Club (sealing and line marking)
- ④ Events
 - Provide more power access for events
- ⑤ Splash Park
- ⑥ Creek bank
 - Install more seating and picnic furniture along the creek bank
 - Upgrade the walking path along the creek bank
- ⑦ Paths
 - Improve path across the foot bridge
- ⑧ Wayfinding and signage



JUBILEE PARK SCHEMATIC DESIGN

IMPROVEMENT PROJECTS

- ① Paths
 - Proposed path network to connect pedestrians from Standish Street and the library
 - Path Access to the Playground from O'Donnell Avenue
- ② Amenities
 - Install low post and rail fencing (with gaps for access) along the boundaries of Cundy Park to improve safety for users.
 - Pedestrian lighting along the paths and skate park.
- ③ Landscaping
 - Additional shade trees
- ④ Skate Park
 - Replace metal skate ramps with concrete ramp suitable for beginners
 - Sheltered gathering space to cater to skate park and half court
- ⑤ Half court
 - Inclusion of half-basketball court to cater for a wider-age group. Potential for a multi-line court and incorporation of netball ring.
- ⑥ Playground
 - Explore opportunities to include additional play options to cater to all abilities.



CUNDY PARK SCHEMATIC DESIGN

IMPROVEMENT PROJECTS

- ① Proposed new fenced off leash dog park
- ② Wayfinding and signage
 - Install wayfinding and signage around Rotary Park
 - Upgrade distance markers
 - Install Welcome Signage along Great Alpine Road to highlight approach to Myrtleford Town Centre
- ③ Assess and widen the swing bridge as required
- ④ Mosaic Trail
 - Expand extent of the Mosaic Trail
 - Ensure DDA access along the trail
- ⑤ Landscaping
 - Re-vegetate riverside. Engage with NECMA and Council to provide support to works
- ⑥ Playground
 - Expand playground across the river to include nature play items



ROTARY PARK SCHEMATIC DESIGN

IMPROVEMENT PROJECTS

- ① Soccer fields (Private ownership)
 - Upgrade sub-surface drainage
 - Upgrade irrigation
 - Turf conversion to be investigated
 - Improve surface shape
 - Upgrade coach box at Savoy Soccer Club, to include two covered team benches with adequate seating for 9 people
 - Include perimeter fencing around the soccer fields
 - Upgrade/provide shade around to spectator areas



SAVOY SOCCER CLUB SCHEMATIC DESIGN

IMPROVEMENT PROJECTS

- ① Playground
 - Upgrade playground equipment at Swinburne Park
 - Providing trees and/or shade sails to provide shade to the playground
- ② Amenities
 - Provide seating and other park amenities such as a bin and drinking fountain
 - Install fence on the side between the playground and road at Swinburne Park
- ③ Path
 - Install an additional path to connect Macaulay Grove to the existing path



SWINBURNE PARK SCHEMATIC DESIGN

IMPROVEMENT PROJECTS

- ① Provide seating along the path
- ② Enhance the vegetation around the park, including shade trees
- ③ Erosion control around the swale



MARCONI PARK SCHEMATIC DESIGN

IMPROVEMENT PROJECTS

- ① Indoor Stadium
- Stadium upgrades including exterior face lift, insulation and sound proofing, air-conditioning, fixed spectator seating, additional storage, meeting room, additional power supply
 - Upgrade toilet / change rooms
 - Surface line marking to be redone in old stadium
 - Run off distance to be complaint in old stadium
 - Resurface squash courts and line marking
 - Provide formalised parking
- ② Myrtleford Recreation Reserve Master Plan to be confirmed by the Myrtleford Recreation Reserve Committee of Management (Crown Land owned by Department of Environment, Energy, Climate Action)



MYRTLEFORD RECREATIONAL RESERVE SCHEMATIC DESIGN